



# Midwest Renewable Energy Tracking System (M-RETS)

M-RETS Subscriber Advisory Group

Oct 23, 2007

- Introductions / Agenda Review
- M-RETS Status Update
  - Program Development status
  - Registration status
- Terms of Use
- Billing and Invoicing
- Subscriber Group and Elections
  - Purpose
  - Elections
- Q&A



## **M-RETS Status Update**

Program Development Status  
Registration Status

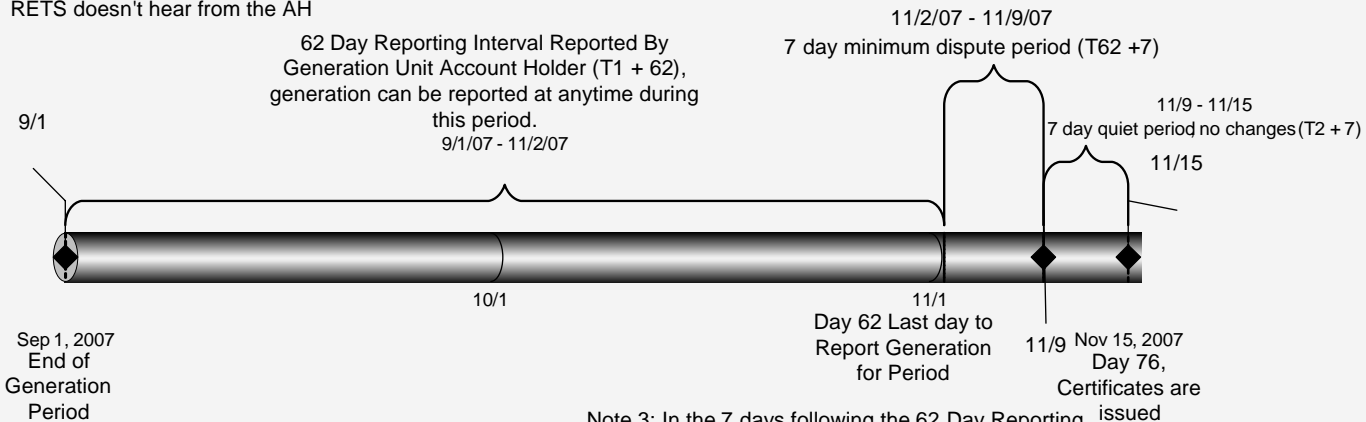
Key Program Task	Status
M-RETS Open for Registration	Completed 7/2/07
Complete Phase 2 Development	Completed 10/1/07
User Training (Phase 2)	Completed 9/25/07
User Acceptance Tests (UAT)	Completed 9/24/07
Facility Registration	On-Going
First Certificate Creation	Completed 10/15/07
Certificate-Only Import/Export	TBD

## Current Period Certificate Creation Time Line

One Condition must be met for Certificate Creation:

1) Posted Generation must be accepted by the Account holder, or

2) Generation is auto-accepted if M-RETS doesn't hear from the AH



Sep 1, 2007  
End of  
Generation  
Period

Note 1: Once Generation is reported by the reporting entity, M-RETS posts the generation. At that point, the Account Holder will accept or dispute the results, or the system will auto-accept (Day 69) if no action is taken.

Note 2: During the 7 day quiet period, disputes may not be logged.

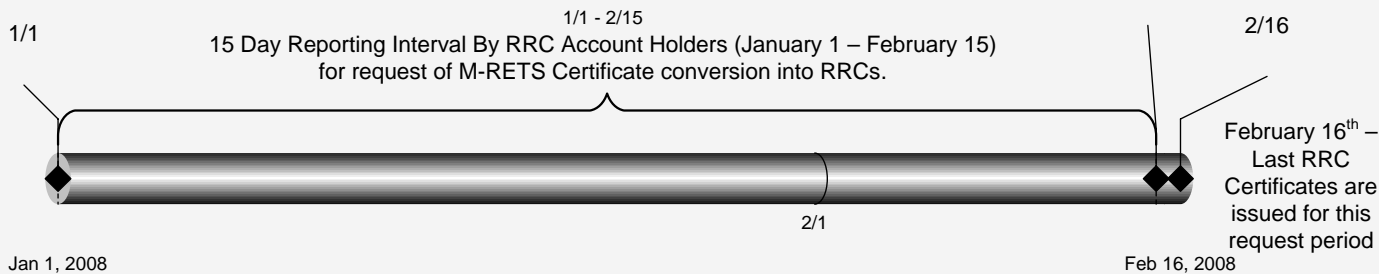
Note 3: In the 7 days following the 62 Day Reporting interval, (Day 62 - Day 69 Period), only disputed data can be resolved by reporting entities or the M-RETS Administrator through posting of the resolved data. As specified in Note 2, after day 69 (Day 69 - Day 76), no disputes will be allowed and no dispute resolution posting will be allowed. All unresolved disputes will have to be handled as prior-period adjustments.

## RRC Certificate Creation Time Line (including fractional RRCs)

The following minimum conditions must be met for RRC Certificate Creation/ Conversion:

- 1) The generator sourcing the RRC must be an eligible WI PSC RPS unit, and
- 2) The generation occurred in the previous calendar year, and
- 3) The M-RETS certificates from the generating unit are in an Active M-RETS Sub-Account

February 15<sup>th</sup> is the last to request RRC Certificate conversion  
2/15



Jan 1, 2008  
RRC AH – begin request

Feb 16, 2008

Note 1: Between January 1<sup>st</sup> and February 15<sup>th</sup>, M-RETS RRC Account Holders can request RRC Certificate conversion for their (Active) M-RETS Certificates created in the previous calendar year.

Note 2: Once requested, the conversion will take place as a batch process each evening for the previous days' request. For example – if an RRC conversion request is made and validated on January 1<sup>st</sup> – the RRC Certificates will be created on January 2<sup>nd</sup>.

Note 3: February 16<sup>th</sup> – the last batch process of RRC conversion will execute for RRC conversion requests that occurred on February 15<sup>th</sup>.

- Since July 2<sup>nd</sup>, the registration process is active
- Account Holder applications:
  - Total of 49 applications received
  - 21 accounts are approved:
    - 5 State Regulator accounts
    - 4 Marketers
    - 7 Utilities
    - 1 Non-Utility/Non-Marketer
    - APX Administrator Account
    - 4 Reporting Entities
  - 28 account applications in pending status (waiting for submission of Terms of Use)
- Facility applications received: 37



## Terms of Use

Account Holder – Revised  
Reporting Entity





## Billing and Invoicing

Rates  
Invoicing

<b>1) One-time Registration fees</b>	Large Generator (>10 MW)	\$	750
	Medium Generator (1-10 MW)	\$	350
	Small Generator (<1 MW)	\$	100
	"Micro" Generator (<40KW)	\$	50
	Large LSE (>1,000,000)	\$	750
	Medium LSE	\$	350
	Small LSE (<100,000)	\$	50
	Marketers	\$	750
<b>2) Subscription Fees (annual)</b>	Large Generator (>10 MW)	\$	1,500
	Medium Generator (1-10 MW)	\$	750
	Small Generator (<1 MW)	\$	250
	"Micro" Generator (<40KW)	\$	100
	Large LSE (>1,000,000)	\$	1,500
	Medium LSE	\$	750
	Small LSE (<100,000)	\$	50
	Marketers	\$	3,000
<b>3) Volumetric fees</b>	\$/MWh on total Load (LSE's pay)	\$	0.0018
	Secondary transfer Fee	\$	0.005

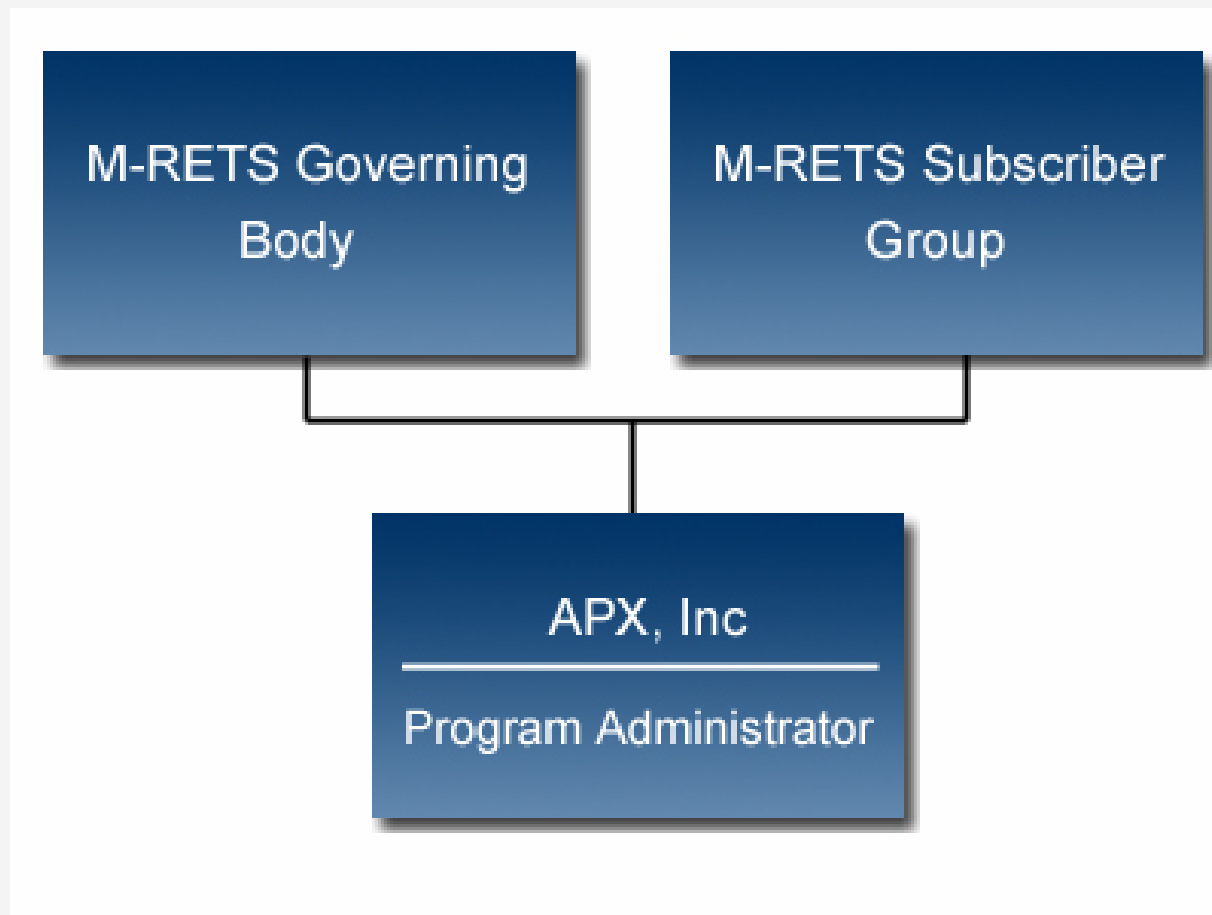
- Registration Fees: One-time (not pro-rated)
- Invoicing: Invoices will be published on a quarterly basis within 5 business days after the end of each quarter. Subscription Fees will be invoiced annually in January of each year.
- Invoicing Period 2007: The 1st invoice for 2007 activity (registration fee, pro-rated subscription and/or volumetric fees) will be published at the beginning of January 2008.
- Subscription and Volumetric Fees for 2007: Subscription and Volumetric fees will be pro-rated based on the registration date or vintage/operating date of 1st certificate created or acquired . The lowest level of pro-ration is by quarter. For example, if an account holder registers a 20 MW generation facility during November 2007, and the earliest vintage of certificates created for that facility is August 2007, then there will be 2007 subscription fees pro-rated for 2 quarters (3rd and 4th quarters).
- Invoicing Period 2008 and forward: The 1st invoice for 2008 activity (full annual subscription fees for the year) will be invoiced at the beginning of January 2008. After that, the next quarterly invoice will be published at the beginning of April 2008 and include fees for any new activity (annual, non-prorated registration, subscription, and/or volumetric fees for Generators and LSEs) during Q1 2008 and volumetric fees for retail load served Q1 2007 for LSEs.

- APX will bill Account Holders directly
- Aggregate Accounts will be billed as a single Account Holder
- Volumetric fees billed quarterly
- 2007 subscription fees will be prorated. Full subscription fees for 2008, billed Jan. '08
- Seller pays secondary transfer fees
- Invoices will be sent via email. Users will be able to view & download invoice via an M-RETS webpage
- Wire payments – due 30 days from invoice date



## M-RETS Subscriber Group

Purpose  
Elections



- Primary objective of M-RETS Subscriber Group is to provide M-RETS Administrator with real-world market-based input on the functionality and operation of M-RETS
- M-RETS Subscriber Group is open to every M-RETS Account Holder, although Account Holders are not required to belong to M-RETS Subscriber Group
- Each account holder may designate one member and one alternate for M-RETS Subscriber Group
- M-RETS Subscriber Group will select Chair and Vice-Chair from among its members, each of which will serve one-year term

- The Midwest ISO may also have a role in M-RETS Subscriber Group, if it so desires
- Governing Advisory Group will participate in meetings of Subscriber Group without voting rights
- Effective September 15, 2007, only M-RETS Account Holders will be members of the Subscriber Group
- APX will facilitate meetings of Subscriber Group and will keep track of discussion topics and decisions made
- Subscriber Group Meetings will be held quarterly
- Elected Chair will determine if meetings are to be held in-person and/or or via teleconference/webinar



# Subscriber Group Role and M-RETS Administrator



- M-RETS Administrator must provide the Subscriber Group with prior notice of any change to rates charged for M-RETS Accounts and with any proposed amendments to Operating Procedures at least one week prior to a quarterly Subscriber Group meeting
- No rate change or amendment to Operating Procedures will take effect prior to its discussion by both Advisory Groups at their meetings
- M-RETS Administrator may schedule special Subscriber Group meetings if rate change or Operating Procedure amendment is of emergency nature such that delay until the next regular group meeting would impair functionality of the system
- Any member of either Advisory Group may propose amendment to Operating Procedures for discussion at regular Advisory Group meetings



- Election for Chair and Vice-Chair will be via email balloting (date TBD)
- Nominations from Account Holders will be sent to APX's Program Administrator prior to the election
- APX will provide list of nominees to the Subscribers
- Subscribers may nominate themselves
- Chair and Vice-chair may be appointed if nominations are not received



## Operating Procedures - Revisions

- Section 4.4.2 – On January 1, 2012, all RRCs created before January 1, 2004 will be retired – and RRCs created after January 1, 2004 will have a 4 year life.
- Section 7.1 and 7.3 – Generator Data Reporting – “...at the bus bar.”
- Section 10.6 – RRCs created on or after January 1, 2004 will have a four-year life.



## Open Floor

Issues  
State/Provincial Updates