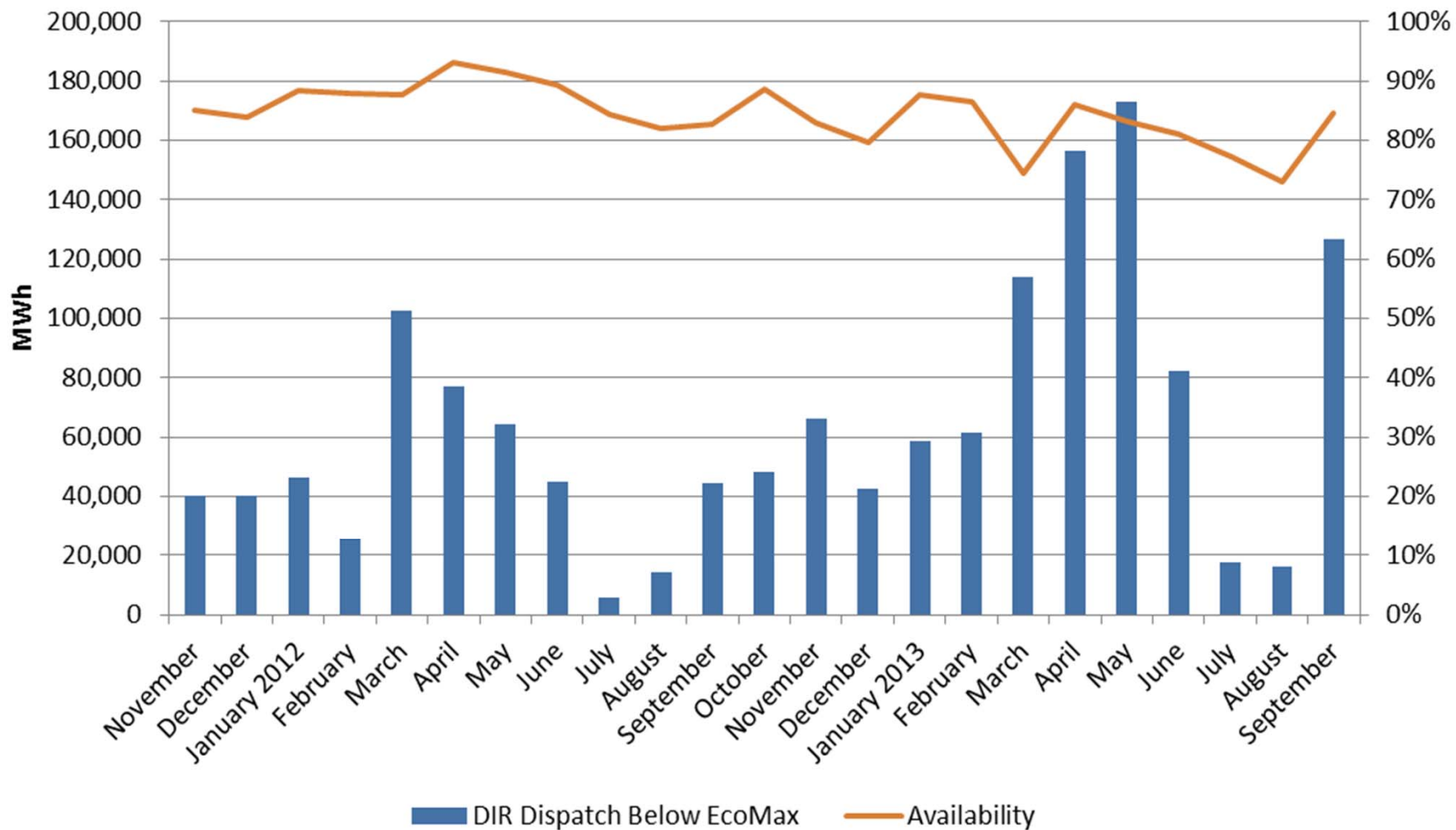


September 2013 Wind and DIR Update

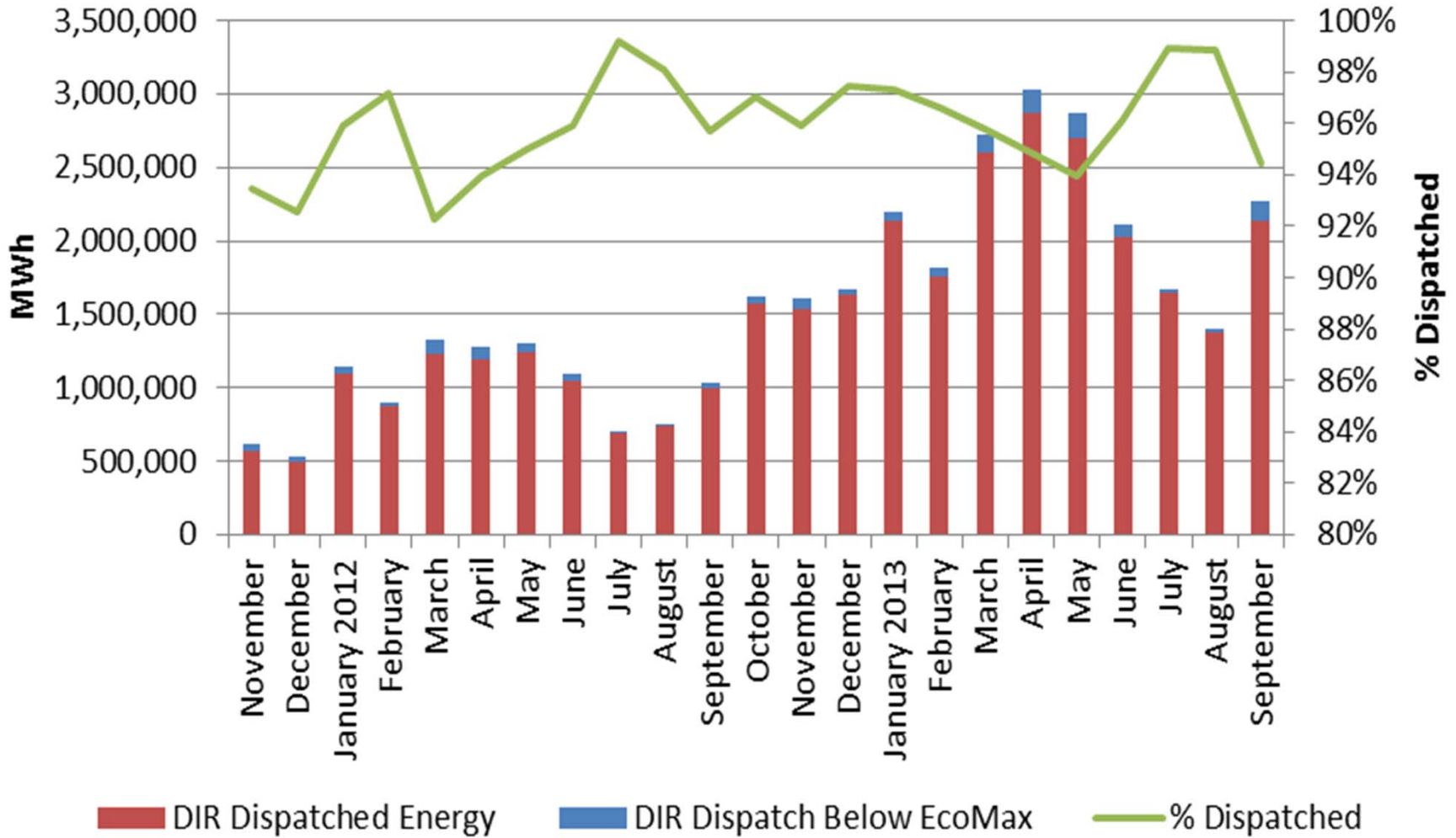
RSC

October 17-18, 2013

DIR Dispatch Below EcoMax and Availability



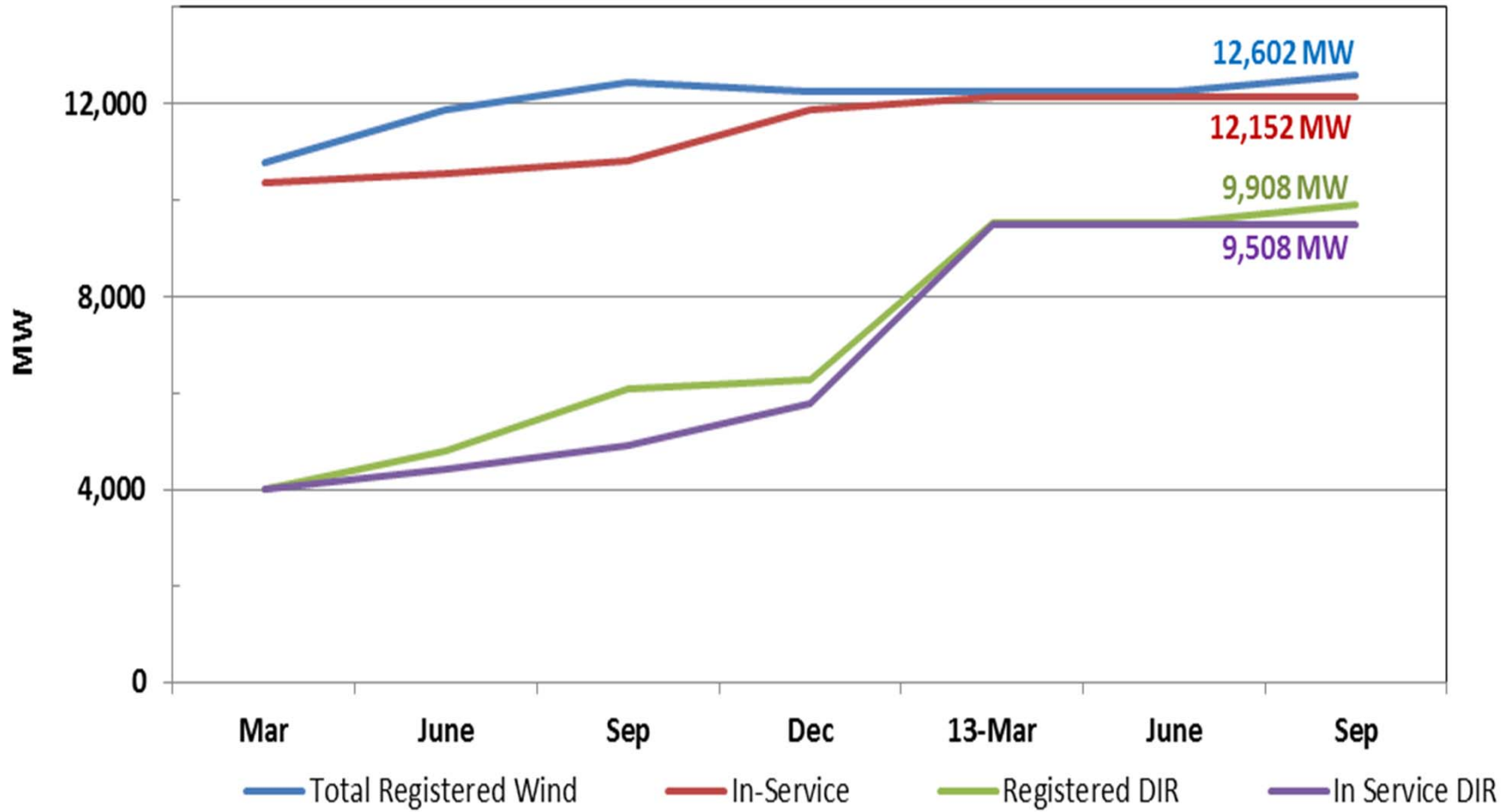
DIR Total Energy



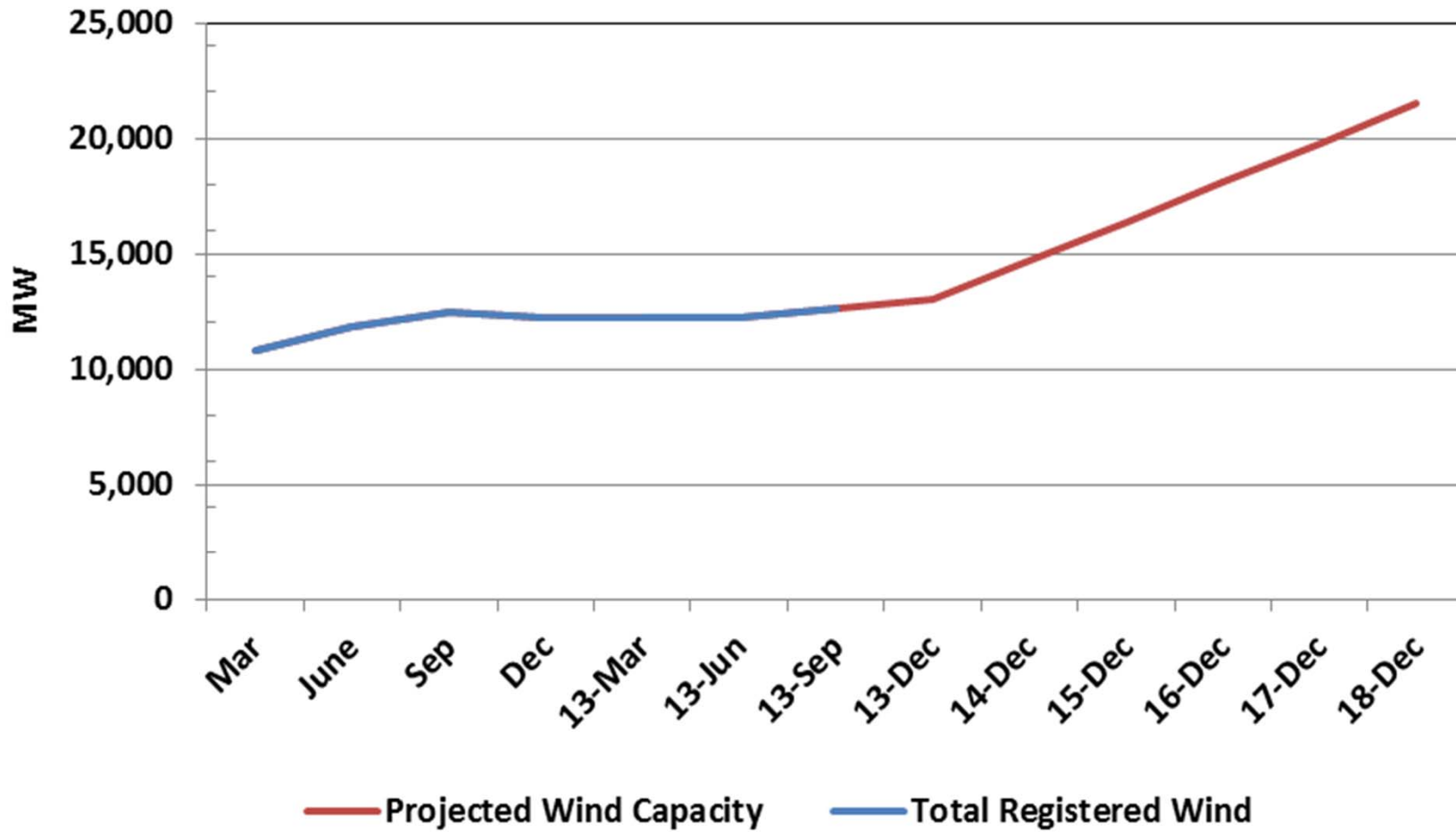
Annual Summary

	Total 2010	Total 2011	Total 2012	Total 2013 YTD
No of Wind Curtailments	2,117	2,034	889	179
Estimated MWHR Curtailed	824,399	720,190	266,383	64,107
Duration (Hours)	19,951	20,365	10,430	2,293
DIR Dispatch Down	N/A	130,296	582,653	806,024

Current Wind Capacity



Projected and Current Wind Capacity

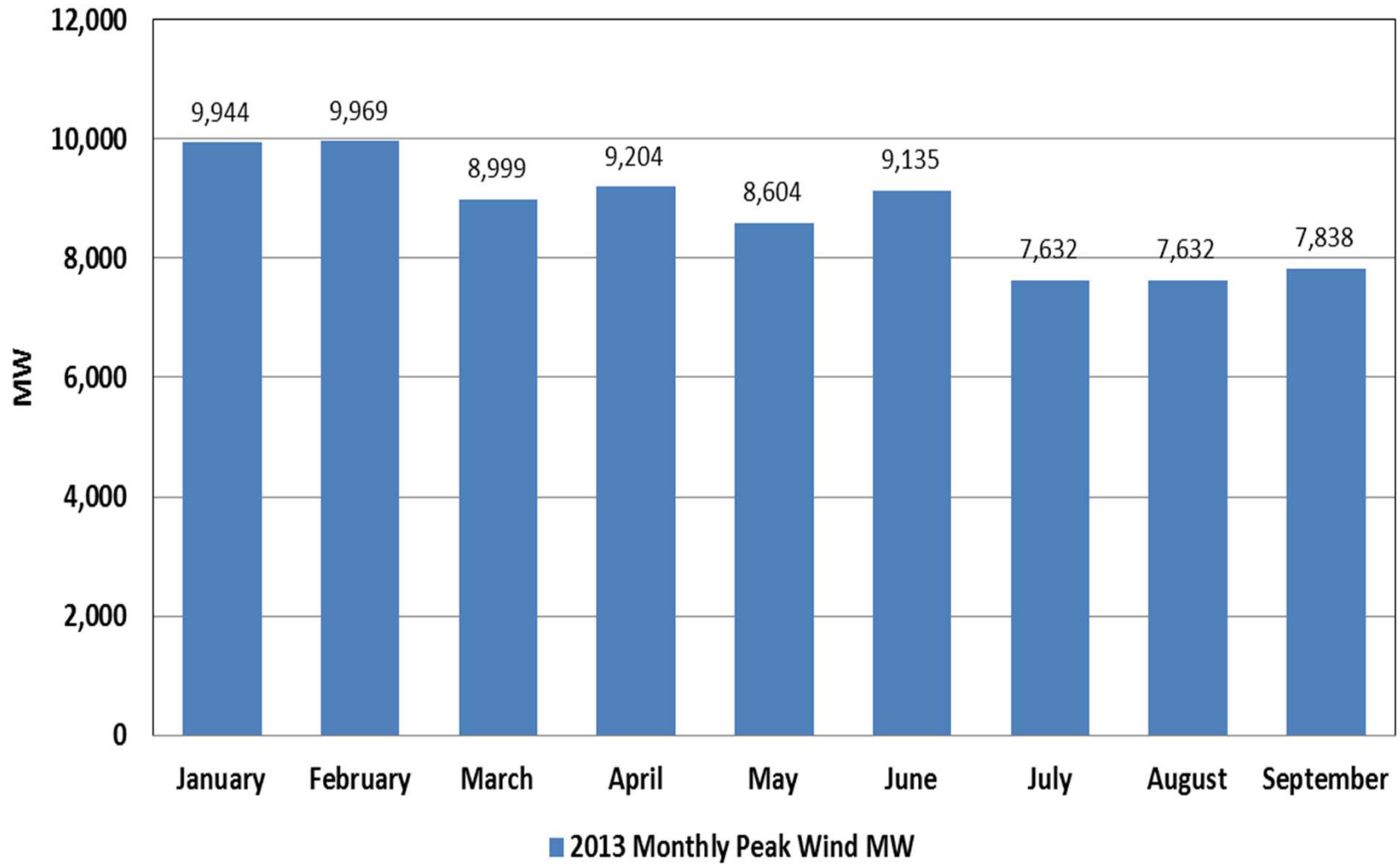


MISO Wind Records

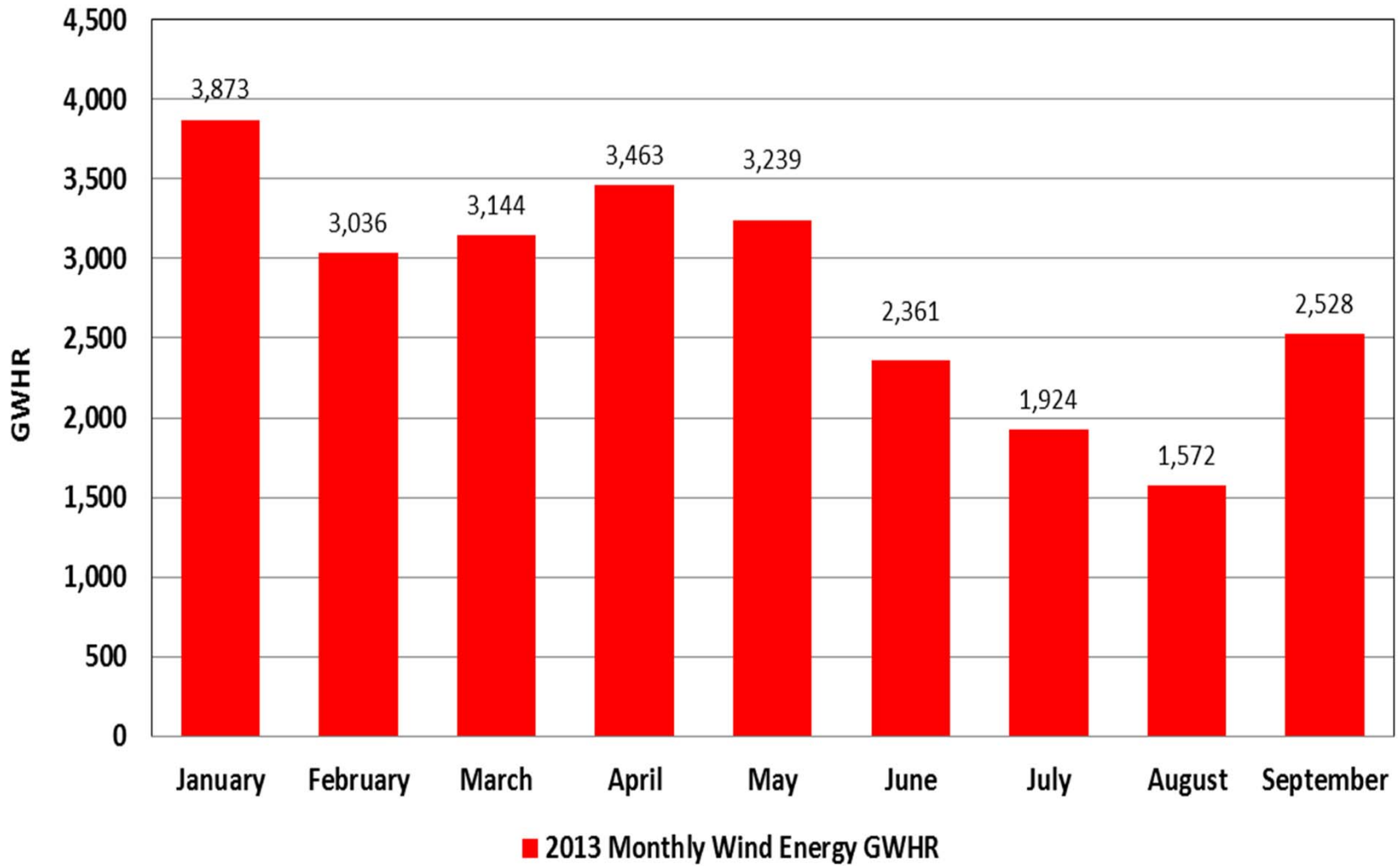
- **All time peak 10,012 MW**
 - 11/23/12 02:53
- **60 Min Ramp up* +2,296 MW**
 - 11/21/12
- **60 Min Ramp dn* -2,495 MW**
 - 11/21/12

***Ramp up/down events DIR driven**

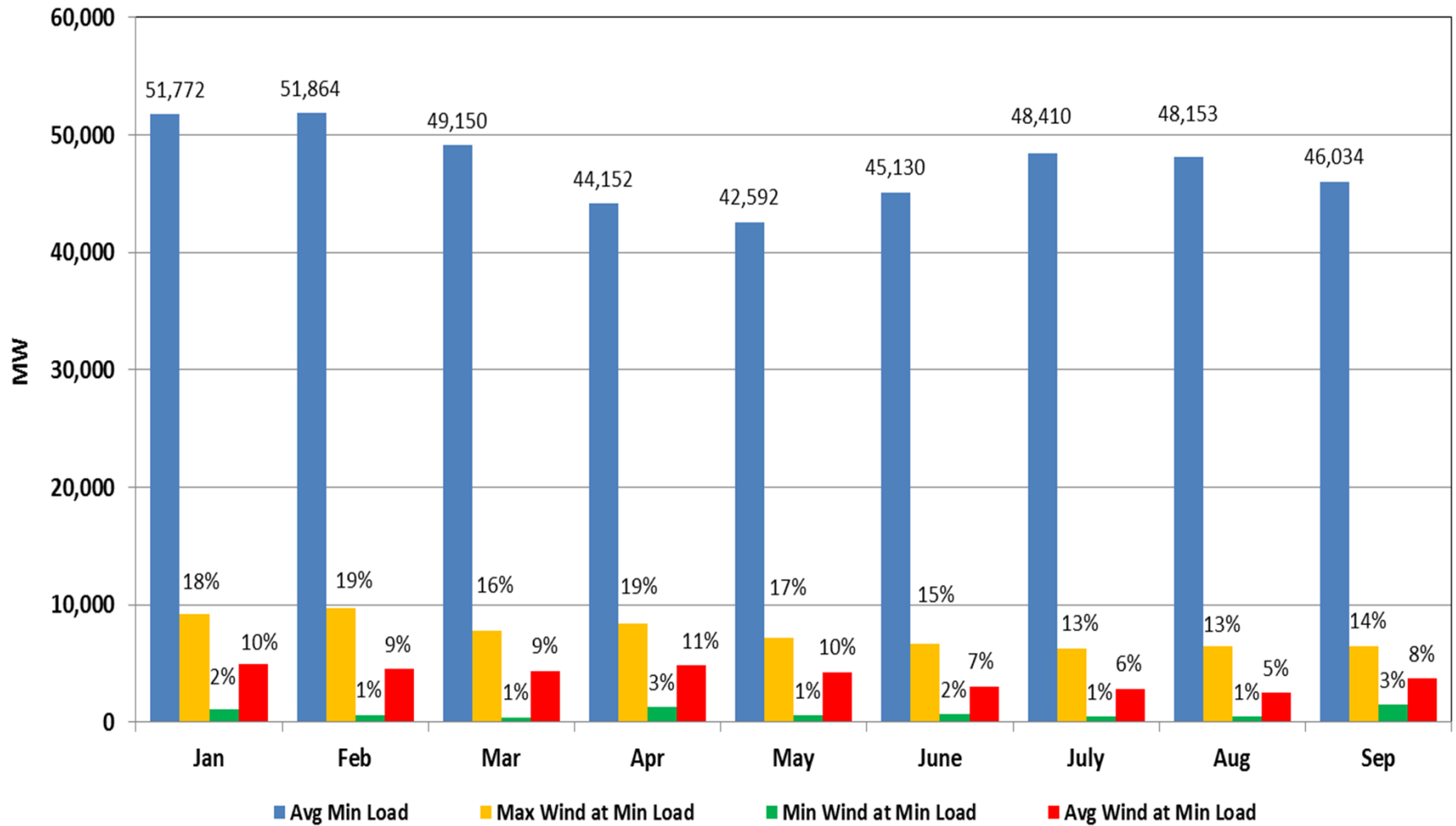
2013 Monthly Peak Wind MW



2013 Monthly Wind Energy GWHR



Maximum, Minimum, Average Wind at Average Minimum Load



Maximum, Minimum, Average Wind at Average Peak Load

